



# LUNA

## BAFFLE CLOUD

**EZO**  
B O R D

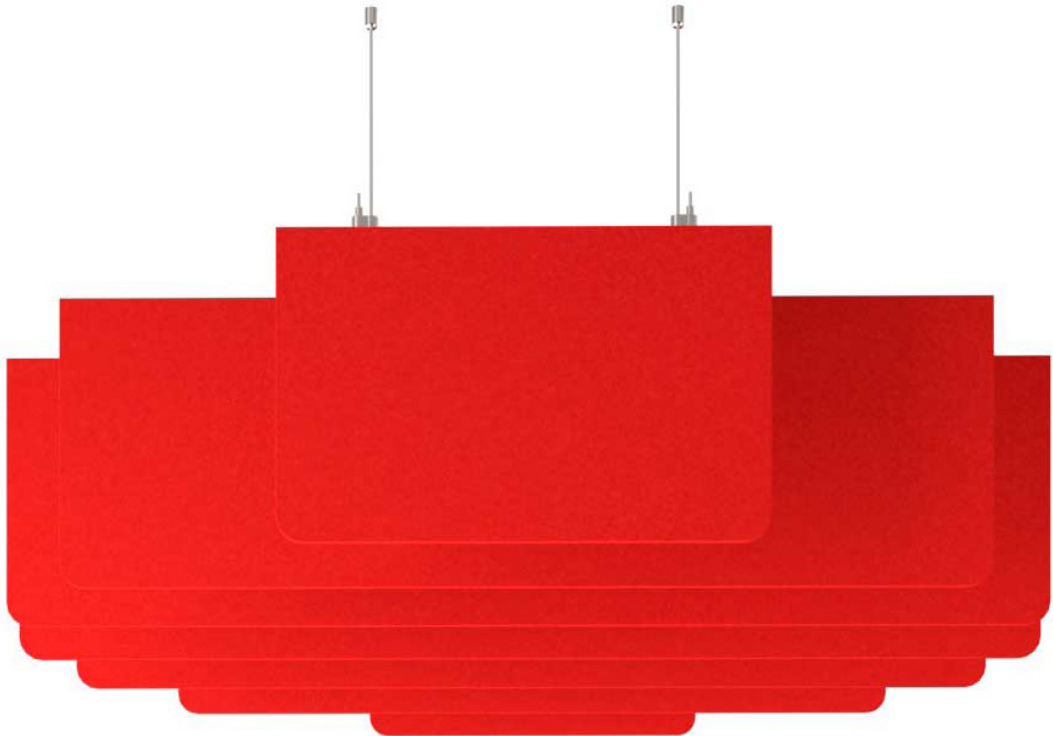




MEET LUNA  
BAFFLE CLOUD

**ezoBord Baffle Clouds are a stylish addition to any ceiling, easy to install, and can be customized through the use of wide array of standard ezoBord colors.**

A new generation of ceiling baffles - sound dampening, free-hanging and designed for style.

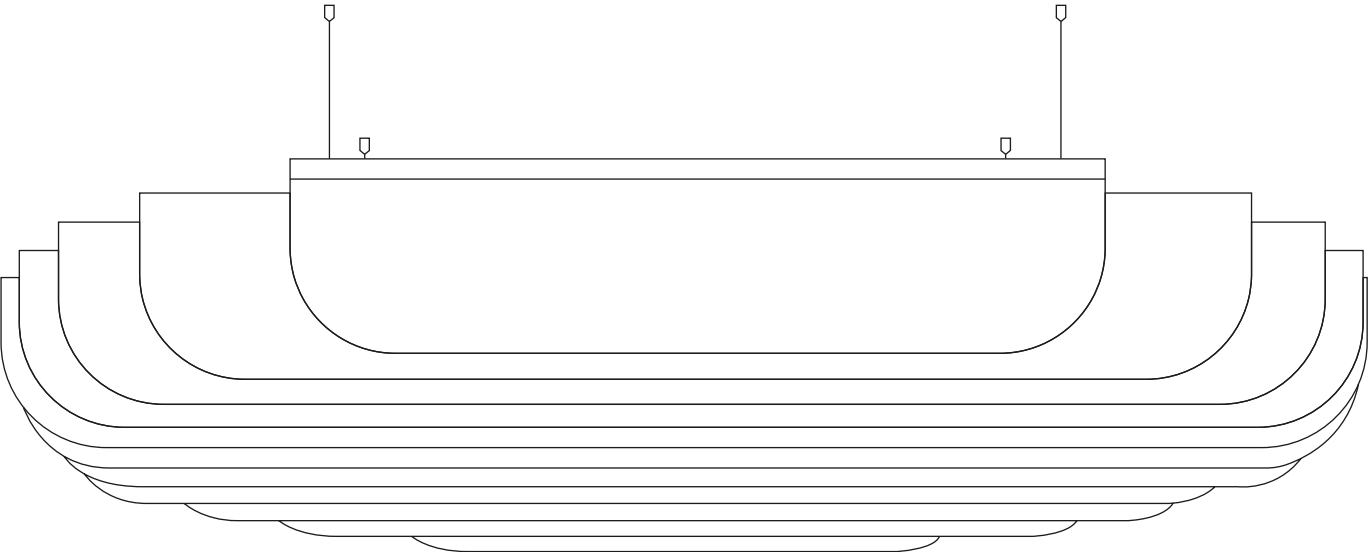


Stylish ezoBord Baffle Clouds are a series of sound absorbing suspended panels that redefine interior open spaces.

The circular Luna model helps you to bring a designer look into open offices, restaurants and public spaces, that will help reduce noise and reverberation. Adjustable to various heights and angles, and installed from deck, ceilings, drywall, standard T bar suspension systems.

# LUNA BAFFLE CLOUD

## LUNA ROUND

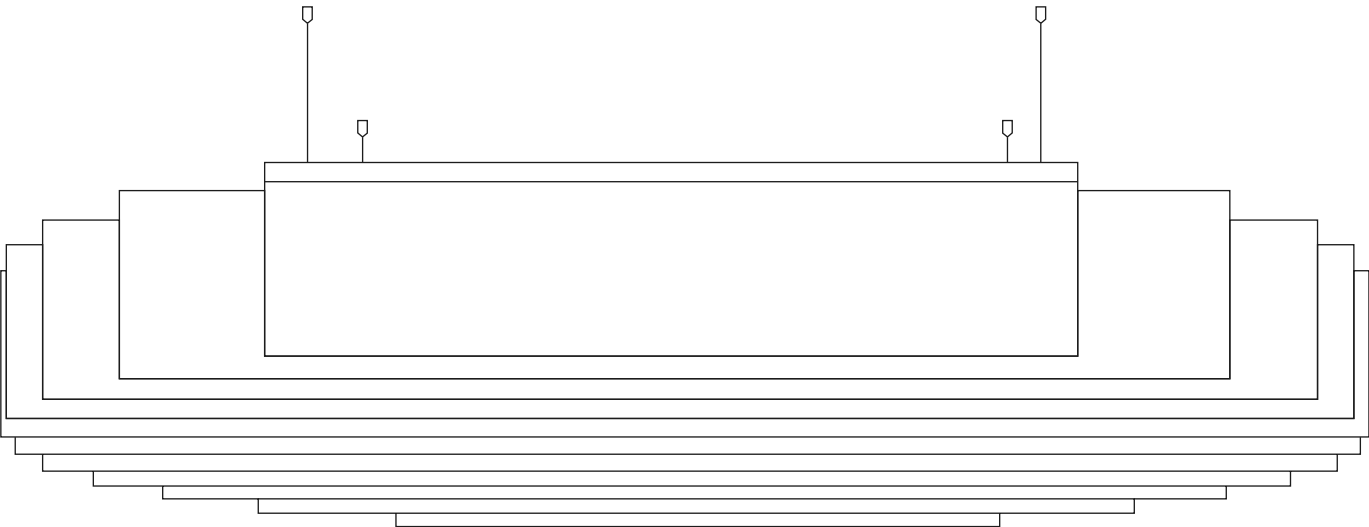


WIDTH	LENGTH	MAX HEIGHT	THICKNESS	BAFFLES
47" (1192mm)	47" (1192mm)	7¾" (197mm)	⅜" (9mm)	9
47" (1192mm)	47" (1192mm)	11½" (292mm)	½" (12mm)	9
47" (1192mm)	47" (1192mm)	7¾" (197mm)	⅜" (9mm)	9
47" (1192mm)	47" (1192mm)	11½" (292mm)	½" (12mm)	9
95" (2413mm)	95" (2413mm)	7¾" (197mm)	⅜" (9mm)	13
95" (2413mm)	95" (2413mm)	11½" (292mm)	½" (12mm)	13
95" (2413mm)	95" (2413mm)	7¾" (197mm)	⅜" (9mm)	13
95" (2413mm)	95" (2413mm)	11½" (292mm)	½" (12mm)	13

Please note that all dimensions are nominal, supplier reserves the right to adjust sizing without prior notification.

# LUNA BAFFLE CLOUD

## LUNA SQUARE



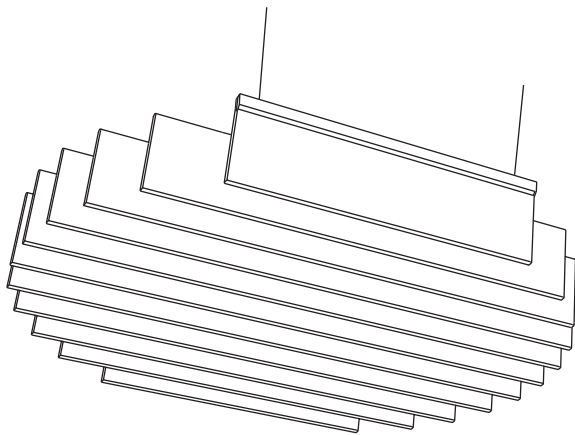
WIDTH	LENGTH	MAX HEIGHT	THICKNESS	BAFFLES
47" (1192mm)	47" (1192mm)	7¾" (197mm)	⅜" (9mm)	9
47" (1192mm)	47" (1192mm)	11½" (292mm)	½" (12mm)	9
47" (1192mm)	47" (1192mm)	7¾" (197mm)	⅜" (9mm)	9
47" (1192mm)	47" (1192mm)	11½" (292mm)	½" (12mm)	9
95" (2413mm)	95" (2413mm)	7¾" (197mm)	⅜" (9mm)	13
95" (2413mm)	95" (2413mm)	11½" (292mm)	½" (12mm)	13
95" (2413mm)	95" (2413mm)	7¾" (197mm)	⅜" (9mm)	13
95" (2413mm)	95" (2413mm)	11½" (292mm)	½" (12mm)	13

Please note that all dimensions are nominal, supplier reserves the right to adjust sizing without prior notification.



# SPECIFICATIONS

## LUNA BAFFLE



### SIZES

1 standard shape available in two sizes.

**WIDTHS AND LENGTHS** 47" (1192mm) 47" (1192mm)  
95" (2413mm) × 95" (2413mm)

**THICKNESS** 3/8" (9mm) | ±0.5mm ;  
1/2" (12mm) | ±0.5mm

### COLOR

Each panel can be manufactured with different color

### DIGITAL PRINT

Custom graphics and textures can be printed on panels

### COMPOSITION

**100% PET** (min. %50 recycled content)

### PRODUCT VARIANCES

Variation in fiber mix and colour may occur. All products will be supplied within commercial tolerances.

### CLEANING

Remove dust and dirt with a stiff plastic bristle brush. Distilled water can be used to remove stains. Always use a soft, clean cloth and blot dry. Vacuuming works great as well.

### FIRE TESTING

#### NORTH AMERICA:

- ASTM E-84 Class A\*
- CAN ULC S102-10

#### EUROPE AND UK:

- EN13501-1: 2007

*\* Upon request, 1/2"(12mm) sheet material is treated with USA origin post-production flame retardant to Class A surface burning characteristics. Post sheet production FR treatment does not contain any Red List Restricted Chemicals and complies with California Proposition 65. Contact customer service for technical information, test data and safety data sheets for flame retardant*

### ACOUSTICS

Refer to ASTM C423 test chart for specific absorption rates/frequency.

- 3/8" (9mm): NRC 0.75 (subject to mounting conditions and geometrical properties)
- 1/2" (12mm): NRC 0.85 (subject to mounting conditions and geometrical properties)

*(subject to mounting conditions and geometrical properties)*

### ENVIRONMENT

Made of polyester fiber, min. 50% of which comes from recycled water bottles which contributes to LEED MR Credit and BREEAM Health and Wellbeing, Materials points due to recycled content, acoustic performance, and low emitting materials. No VOC's: CDPH v1.2 and REACH SVHC Compliant.

### USGBC LEED V4 CREDITS

While individual products do not 'earn' LEED credits, ezoBord can contribute to the following LEED v4 Credits. Please refer to the USGBC LEED credit guides for detailed requirements.

- EQc9 for enhancing acoustic performance
- MRc3 BPDO for sourcing of raw materials for recycled contribution
- EQc6 interior lighting for surface reflectance (lighter color options).

### NOISE REDUCTION - 3/8" (9MM)

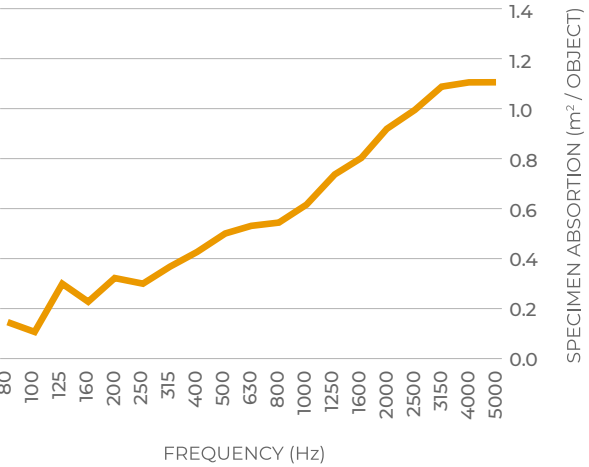
Constructed from  
3/8" (9mm) ezoBord

Baffle Height  
121/8" (307.97mm)

Baffle Spacing  
105/8" (269.88mm)

### SOUND ABSORPTION COEFFICIENTS (ASTM C423-17)

NRC	SAA	125	250	500	1000	2000	4000
0.60	0.59	0.21	0.33	0.49	0.63	0.91	1.10



### NOISE REDUCTION - 1/2" (12MM)

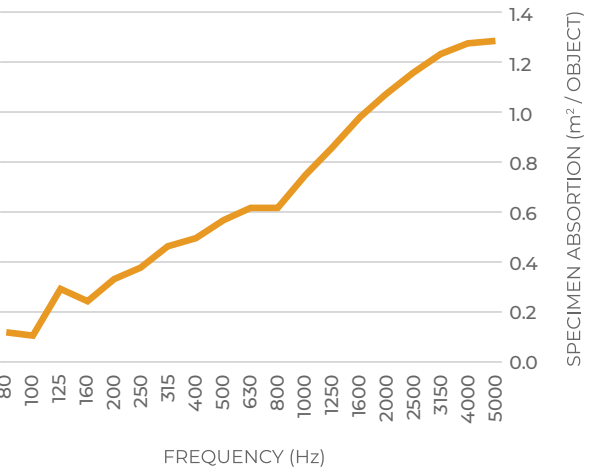
Constructed from  
1/2" (12mm) ezoBord

Baffle Height  
12" (304.8mm)

Baffle Spacing  
101/2" (266.7mm)

### SOUND ABSORPTION COEFFICIENTS (ASTM C423-17)

NRC	SAA	125	250	500	1000	2000	4000
0.70	0.70	0.22	0.40	0.56	0.74	1.08	1.27









# ENVIRONMENT

## Our Commitment to the Environment

There are approximately 50 billion water bottles consumed around the world each year, and only about half of those get recycled. The rest end up in landfills, littered through our neighborhoods, or floating in our oceans.

Bottled water consumption has more than doubled since 2000; in 2015 there was the equivalent of more than 5 bottles of water consumed for every person in the USA every single week. This, of course, means that the amount of oil required to produce the energy used for the water bottling process continues to grow.

In 2007, the last year global statistics of oil consumption were available, between 32 million and 54 million barrels of oil were used to produce the bottled water that was consumed in the USA alone. This energy is used to make the bottles from PET pellets (1 million tons in the USA), treat water, bottle the water, label the bottles, and transport the bottled water. Most of the energy consumption occurs in the creation of the bottles themselves. To help in the lifecycle of this plastic product, we have chosen to manufacture our material so that it recycles these PET bottles. We are doing our part to reduce the waste. This acoustical and tackable material is made from PET bottles in a zero-waste process with postindustrial recycling. An environmentally friendly, sustainable, and waste reduced alternative to traditional acoustical/tackable material that looks great in any office, education, or open space installation.

## ezoBord is



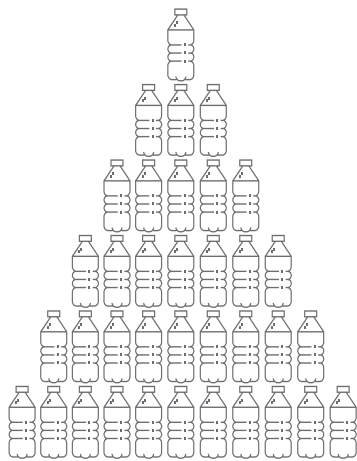
- low VOC
- formaldehyde free

## DID YOU KNOW...



For every pound of recycled PET bottles (approximately 23) energy use is reduced by 84% and greenhouse gas emissions are reduced by 71%.

## ± 166 PET BOTTLES



are used to make one 9mm thick ezoBord sheet





## CANADA

---

### Ayrsonics Inc - Ontario

825 Trillium Drive  
Kitchener, Ontario N2R 1J9  
844-441-1122  
sales@ayrsonics.com

### Ayrsonics Inc - Alberta

292236 Nose Creek Boulevard  
Building 1B, Unit #19  
Rocky View County, AB T4A 3N7  
844-441-1122  
sales@ayrsonics.com

### EzoBord Corporate Office

6845 Rexwood Road, Unit 7  
Mississauga, ON L4V 1S5  
416-665-3571  
info@ezobord.com

## UNITED STATES

---

### Ayrsonics Midwest LLC

820 Tollgate Road  
Elgin, IL 60123  
800-517-0686  
sales.amw@ayrsonicsusa.com

### Ayrsonics Southwest LLC

13430 N Dysart Rd. Suite 120  
Surprise, AZ 85379  
213-833-9700  
sales.asw@ayrsonicsusa.com

### Ayrsonics Southeast LLC

15 Enterprise Way  
Dahlonega, GA 30533  
706-539-4711  
sales.ase@ayrsonicsusa.com

## UNITED KINGDOM

---

### EzoBord UK Limited

Unit 20, Westwood Business Park  
Margate, Kent. CT9 4JJ  
+44 1843-264027  
sales@ezobord.co.uk

## IRELAND

---

### EzoBord Ireland Limited

Inniscarra, Main Street,  
Rathcoole, Co. Dublin,  
D24 EO29, Ireland  
+353 1485-4774  
sales@ezobord.ie

## CENTRAL & LATIN AMERICA

---

### EzoBord Costa Rica SRL

100 Sur 25 Oeste Recope  
Bodega #16 Ochomogo, Cartago  
+506 8842-4613  
info-ebcr@ezobord.com

### EzoBord - LATAM

Buenos Aires, Argentina  
+54 9 11 5657-1793  
info-latam@ezobord.com